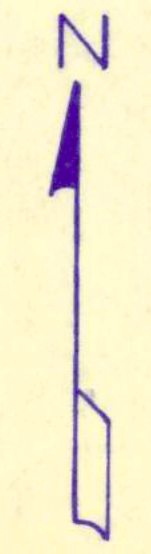


- OWNERSHIP LEGEND**
- ① DAVE MATUSESKI
  - ② LARRY MATUSESKI
  - ③ VINCE MISUKANIS
  - ④ LINDGREN
  - ⑤ VIRGIL H. KUHLMAN
  - ⑥ OBRASKE
  - ⑦ LEONARD MOHELSKI



- AIRPORT PROPERTY
- PROPOSED CLEAR ZONE ESMT.
- PROPOSED AVIGATION ESMT.
- PROPOSED FEE TITLE PURCHASE

I hereby certify that this plan, map, or report was prepared by me or under my direct supervision and that I am a duly registered professional engineer in the State of Minnesota.

DESIGNED BY	K.C.W.
DRAWN BY	G.A.M.
CHECKED BY	
SURVEYED BY	
SCALE:	1" = 400'

DESIGNED BY  
DRAWN BY  
CHECKED BY  
SURVEYED BY

408 BOARD OF TRADE BUILDING  
DULUTH, MINNESOTA 55802

**AREM, INC.**  
CONSULTING ENGINEERS  
WATER AND WASTE WATER SYSTEMS DESIGN  
CIVIL ENGINEERING □ CHEMISTRY

NO.	DESCRIPTION	DATE

MOOSE LAKE CARLTON CO.  
AIRPORT  
PROPOSED PROPERTY PURCHASE

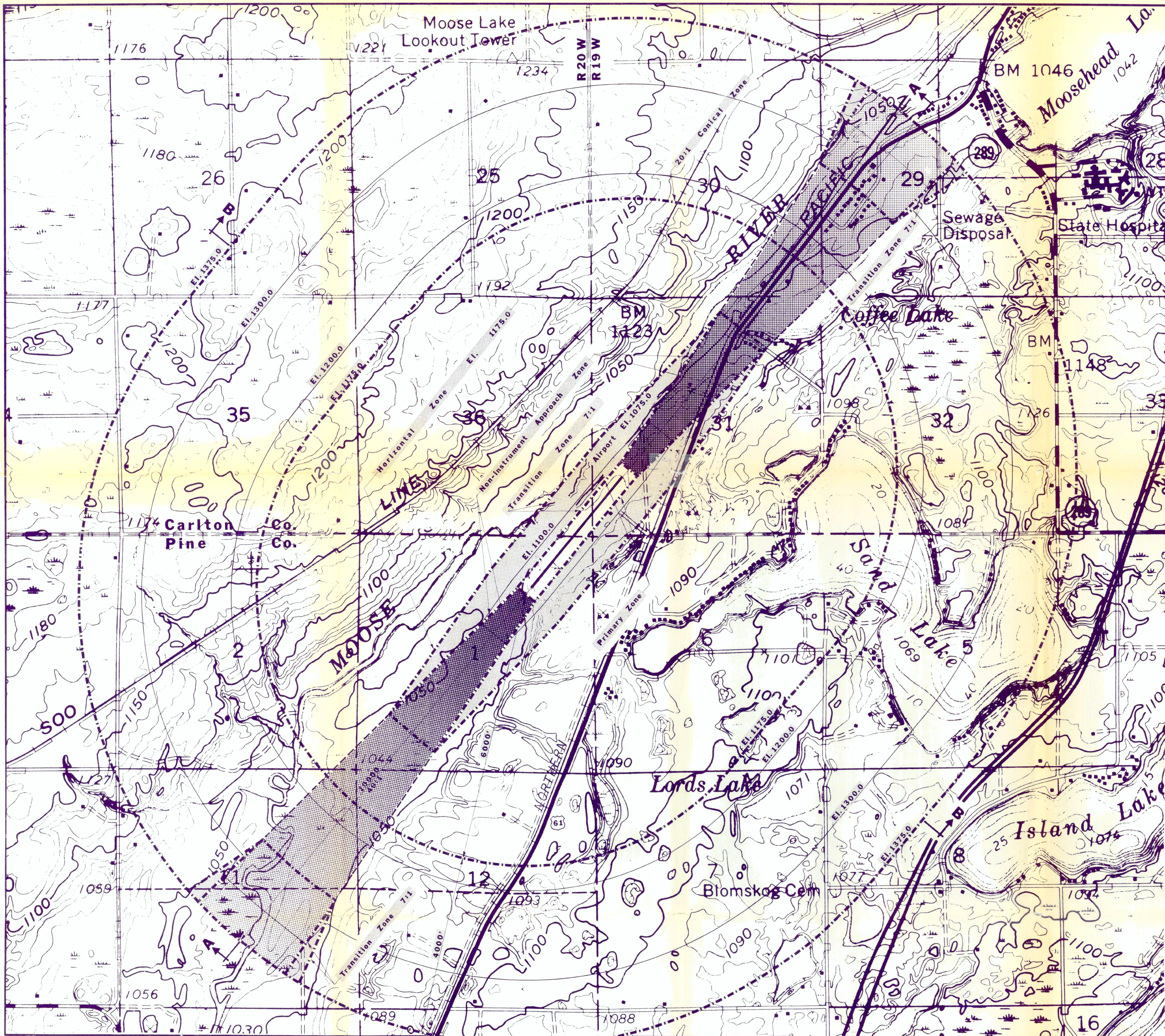
DATE	5-9-79
W.O. NO.	0609
SHEET NO.	
OF	

Elim. Avig. Esmt. Include Per. to North Rd. 10-26-82  
Update ownership & assn. parcel nos. 10-21-83  
Change 10' No. from 10' to 15' to clear 10' 7-15-83

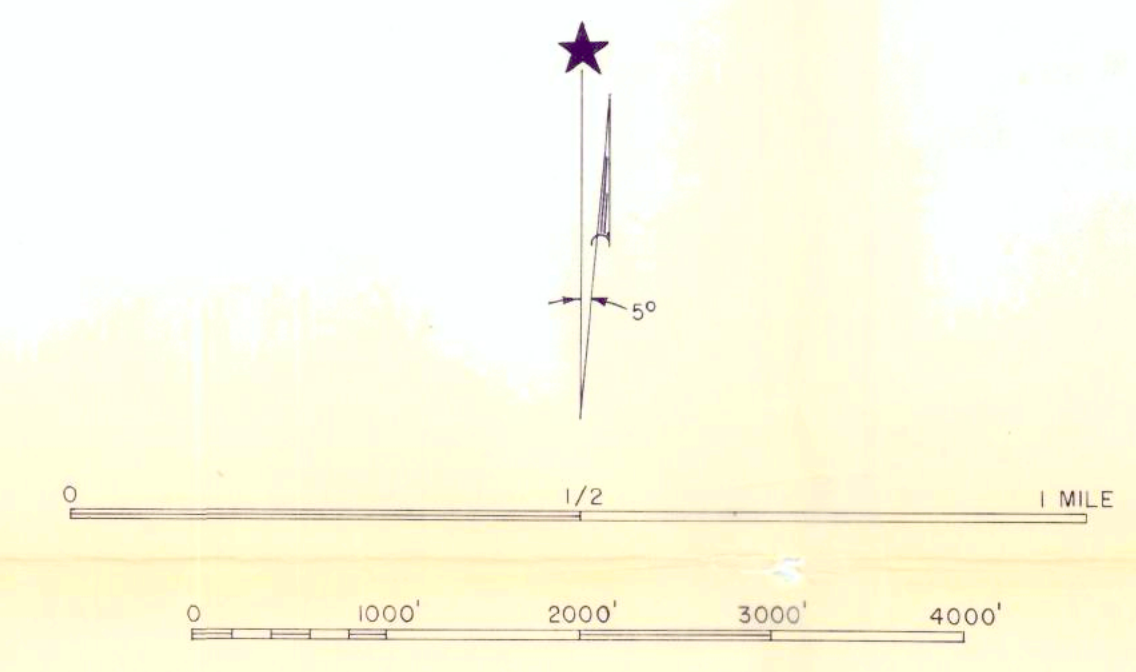
12600 x 8400

5500





- NOTES:
1. TOPOGRAPHIC CONTOUR INTERVALS ARE 10 FEET. DATUM IS MEAN SEA LEVEL ELEVATION.
  2. THE AERIAL CONTOURS ILLUSTRATE THE HEIGHT LIMITATIONS WITHIN EACH ZONE.
  3. A SLOPE, SUCH AS 40:1, EXPRESSES THE HORIZONTAL DISTANCE OF 40 FEET TO THE VERTICAL DISTANCE OF 1 FOOT.
  4. EXISTING TOPOGRAPHIC SYMBOLS ARE THOSE USED BY THE U.S. GEOLOGICAL SURVEY.
  5. IN THOSE AREAS WHERE EXISTING TERRAIN OR TREES PENETRATE ONE OR MORE OF THE IMAGINARY SURFACES THE HEIGHT OF STRUCTURES SHALL BE RESTRICTED ONLY TO THE HEIGHT OF THE TREE CANOPY WHICH PROVIDES A NATURAL SHIELD TO THE STRUCTURE.
  6. ULTIMATE RUNWAY OF 3200' IS SHOWN. 700' EXTENSION TO BE AT SOUTHWEST END OF EXISTING 2500' RUNWAY.



T46N  
T45N

LEGEND

- ULTIMATE RUNWAY
- ZONE BOUNDARY
- TOPOGRAPHIC CONTOURS
- AERIAL CONTOURS
- SECTION LINES

**PREM, INC.** 408 BOARD OF TRADE BUILDING  
CONSULTING ENGINEERS DULUTH, MINNESOTA 55802  
WATER AND WASTE WATER SYSTEMS DESIGN  
CIVIL ENGINEERING □ CHEMISTRY

**MOOSE LAKE-CARLTON COUNTY AIRPORT  
ZONING PLAN  
MOOSE LAKE, MINNESOTA**  
STATE AIRPORT ZONING BOARD

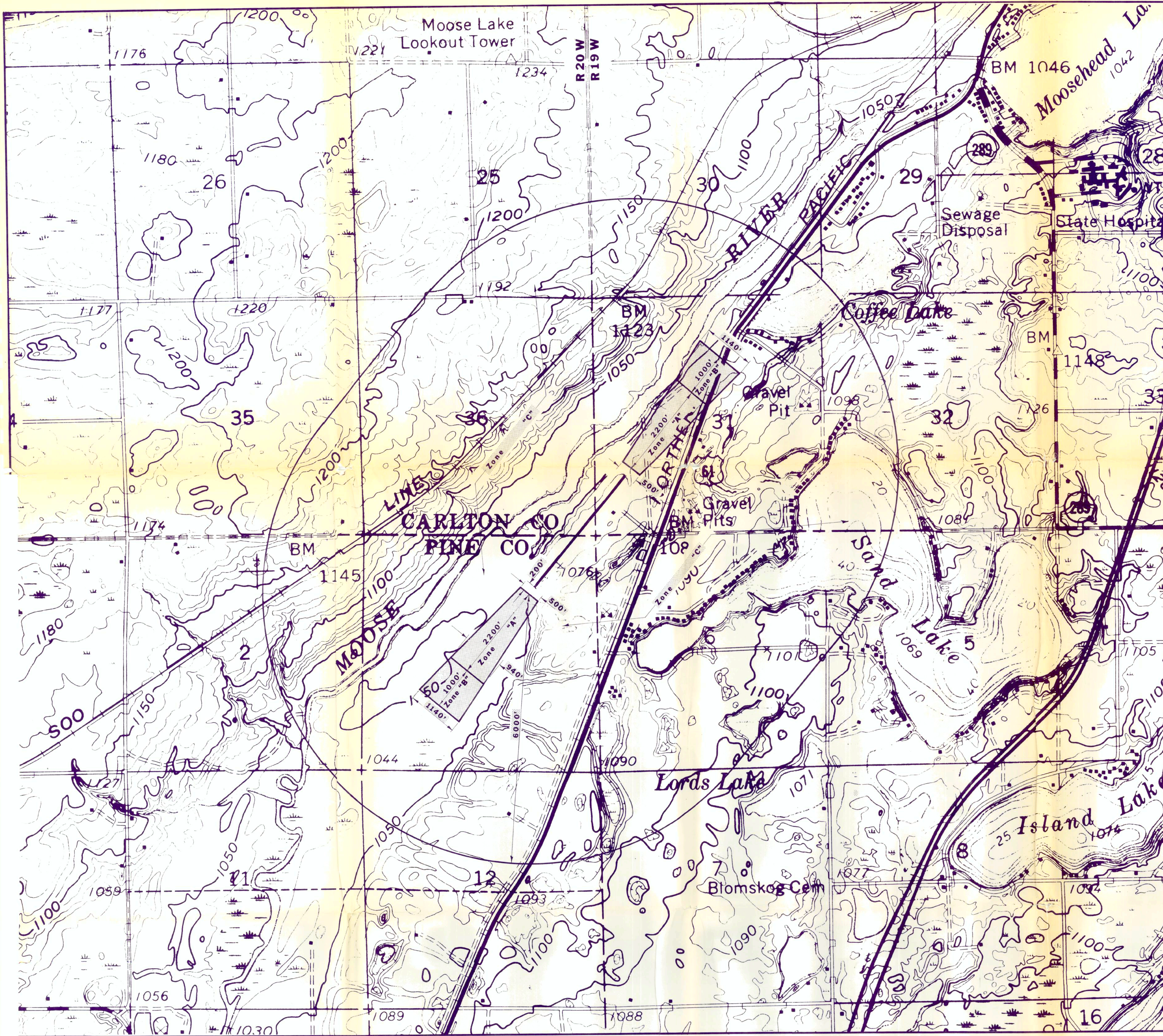
APPROVAL _____	DATE _____
APPROVAL _____	DATE _____
APPROVAL _____	DATE _____

NO.	DESCRIPTION	DATE	I hereby certify that this plan, specification, or report was prepared by me or under my direct supervision and that I am a duly registered professional ENGINEER under the laws of the state of MINNESOTA. <i>Blomskog</i> dated 4/12/13 reg. no. 3114	
	REVISIONS			



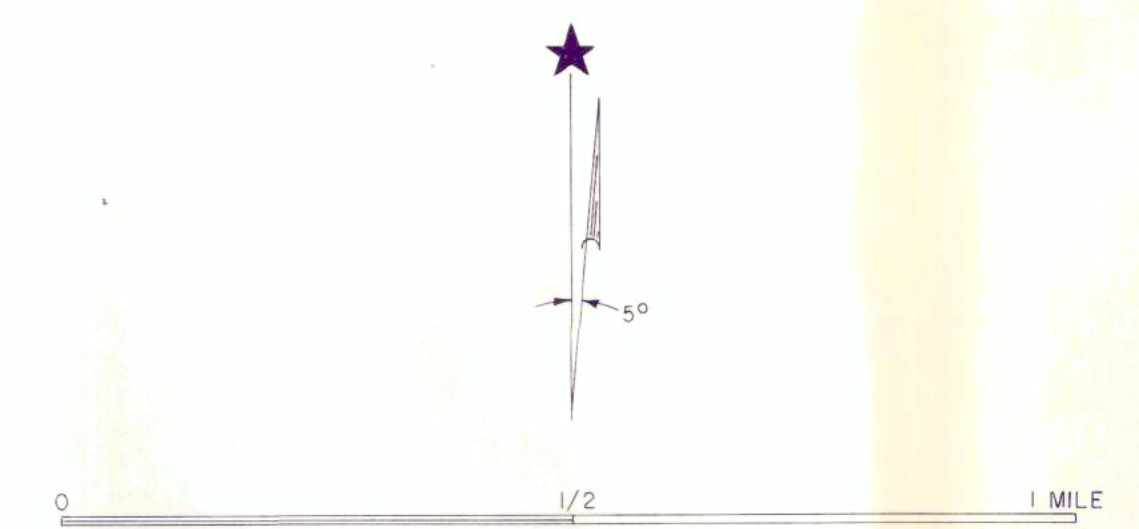






NOTES:  
 1. TOPOGRAPHIC CONTOUR INTERVALS ARE 10 FEET  
 DATUM IS MEAN SEA LEVEL ELEVATION.  
 2. EXISTING TOPOGRAPHIC SYMBOLS ARE THOSE USED  
 BY THE U.S. GEOLOGICAL SURVEY.

T46N  
T45N

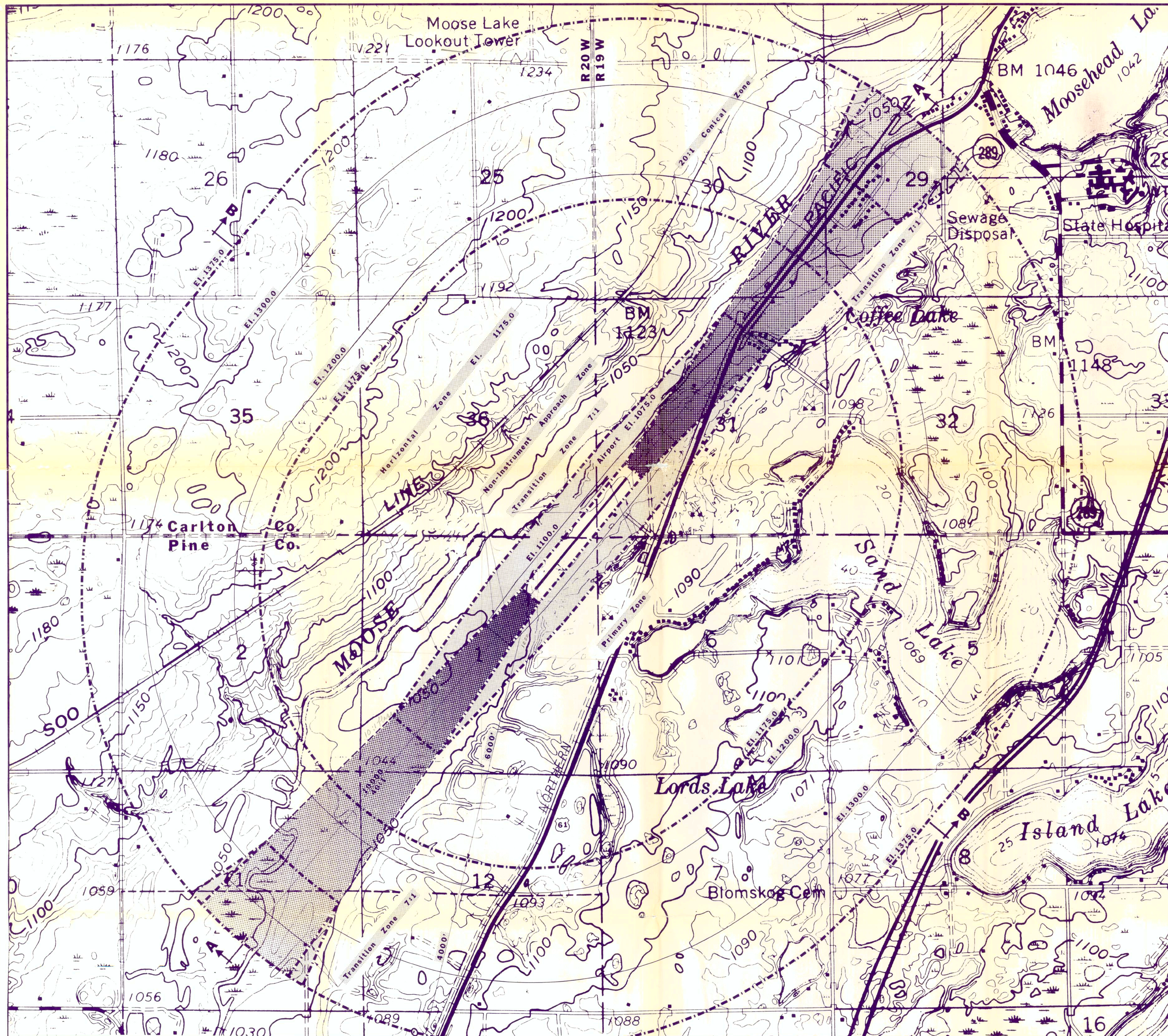


**LEGEND**

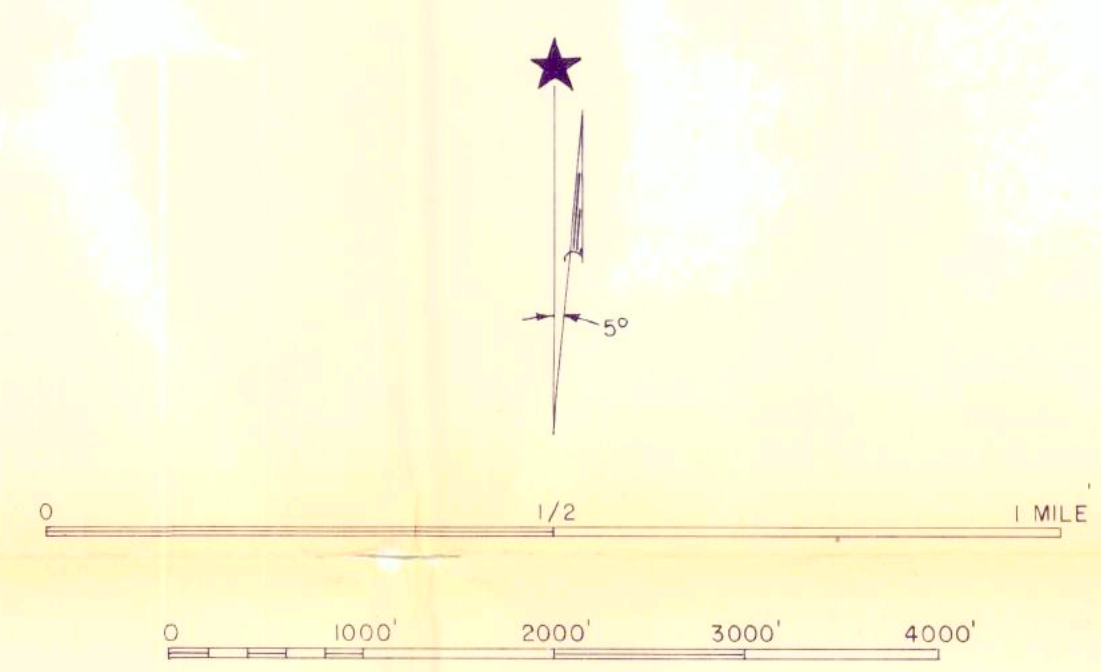
ULTIMATE RUNWAY	
ZONE BOUNDARY	
TOPOGRAPHIC CONTOURS	
SECTION LINES	

DATE 11-29-73	MOOSE LAKE - CARLTON COUNTY AIRPORT	DESIGNED BY	RWM	408 BOARD OF TRADE BUILDING DULUTH, MINNESOTA 55802	11-73	I hereby certify that this plan, specification, or report was prepared by me or under my direct supervision and that I am a duly registered professional engineer in the State of Minnesota under the laws of this state of
W.D. NO. 4503	MOOSE LAKE, MINNESOTA	DRAWN BY	GLE	CONSULTING ENGINEERS	11-73	
SHEET NO. 3	LAND USE ZONING PLAN	CHECKED BY	AS NOTED	WATER AND WASTE WATER SYSTEMS DESIGN		
OF 3		SURVEYED BY		CIVIL ENGINEERING □ CHEMISTRY		





- NOTES:
1. TOPOGRAPHIC CONTOUR INTERVALS ARE 10 FEET. DATUM IS MEAN SEA LEVEL ELEVATION.
  2. THE AERIAL CONTOURS ILLUSTRATE THE HEIGHT LIMITATIONS WITHIN EACH ZONE.
  3. A SLOPE, SUCH AS 40:1, EXPRESSES THE HORIZONTAL DISTANCE OF 40 FEET TO THE VERTICAL DISTANCE OF 1 FOOT.
  4. EXISTING TOPOGRAPHIC SYMBOLS ARE THOSE USED BY THE U.S. GEOLOGICAL SURVEY.
  5. IN THOSE AREAS WHERE EXISTING TERRAIN OR TREES PENETRATE ONE OR MORE OF THE IMAGINARY SURFACES THE HEIGHT OF STRUCTURES SHALL BE RESTRICTED ONLY TO THE HEIGHT OF THE TREE CANOPY WHICH PROVIDES A NATURAL SHIELD TO THE STRUCTURE.
  6. ULTIMATE RUNWAY OF 3200' IS SHOWN. 700' EXTENSION TO BE AT SOUTHWEST END OF EXISTING 2500' RUNWAY.



T46N  
T45N

SCALE 1" = 1000'

**LEGEND**

ULTIMATE RUNWAY

ZONE BOUNDARY

TOPOGRAPHIC CONTOURS

AERIAL CONTOURS

SECTION LINES

OR

**RREM, INC.** 408 BOARD OF TRADE BUILDING  
CONSULTING ENGINEERS DULUTH, MINNESOTA 55802

WATER AND WASTE WATER SYSTEMS DESIGN  
CIVIL ENGINEERING □ CHEMISTRY

**MOOSE LAKE-CARLTON COUNTY AIRPORT  
ZONING PLAN  
MOOSE LAKE, MINNESOTA**

STATE AIRPORT ZONING BOARD

APPROVAL _____	DATE _____
APPROVAL _____	DATE _____
APPROVAL _____	DATE _____

NO.	DESCRIPTION	DATE

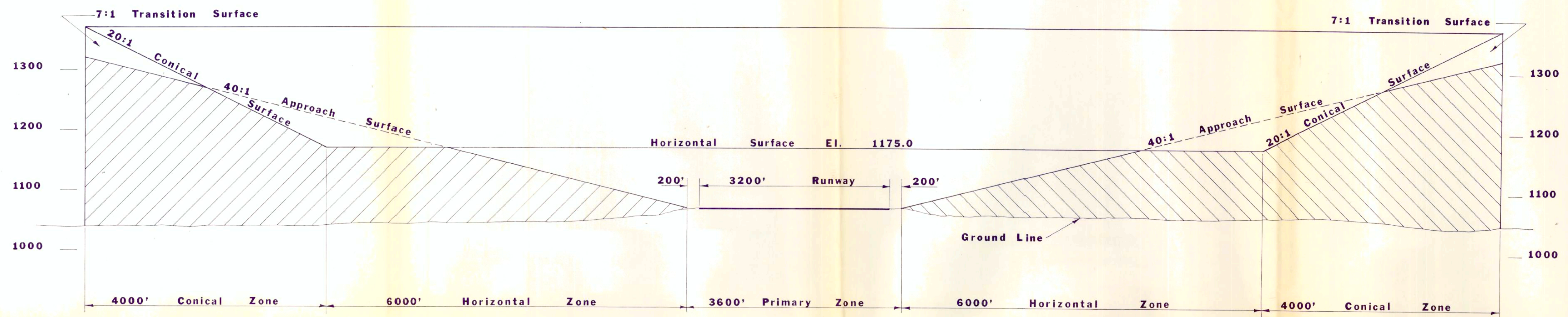
I hereby certify that this plan specification, or report was prepared by me or under my direct supervision and that I am a duly registered professional ENGINEER under the laws of the State of MINNESOTA.

*Blair L. Gussard*  
DATE 12/12/73 REG. NO. 8114

PROFESSIONAL ENGINEER

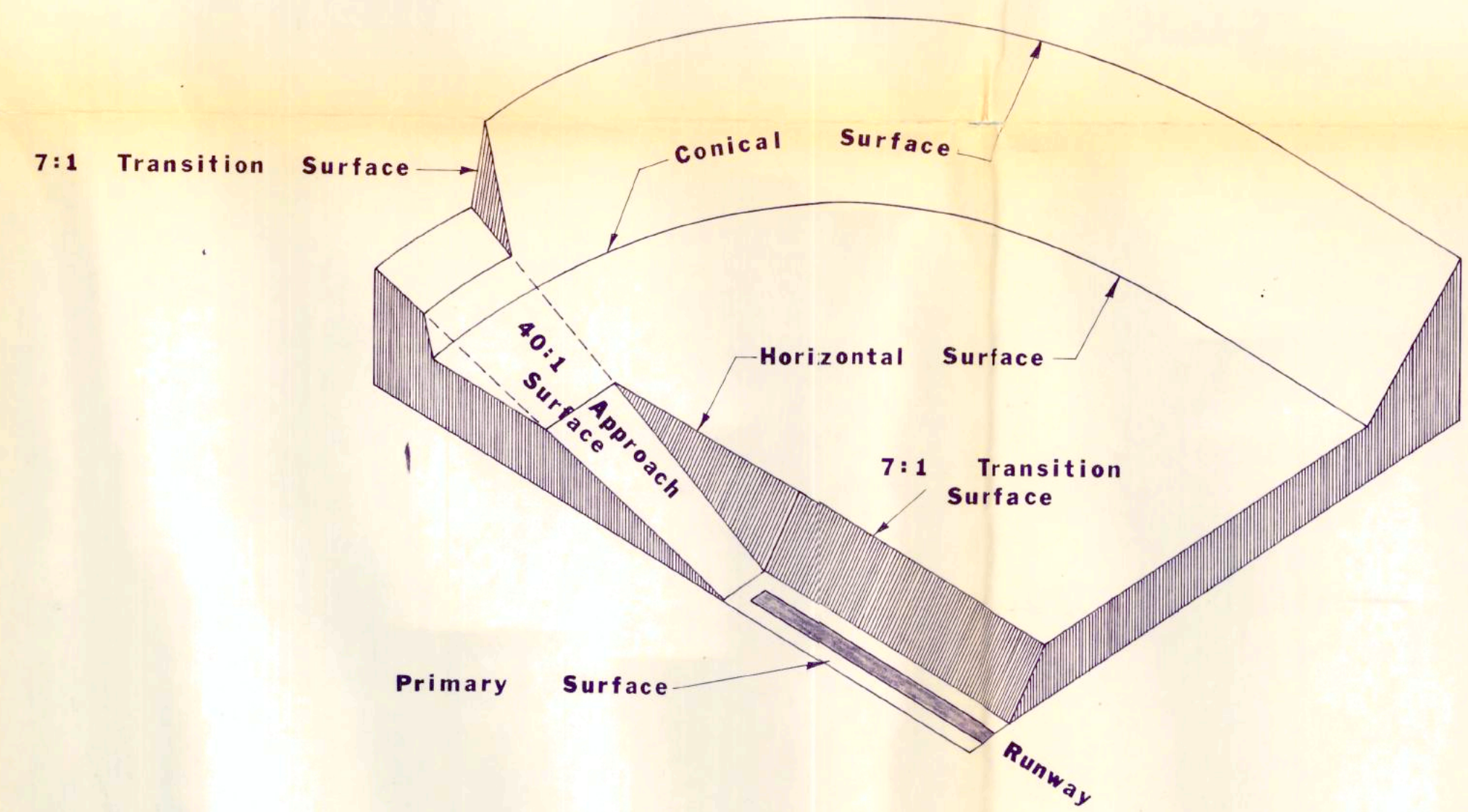
AIRSPACE ZONING PLAN SHEET NO. 1 OF 3



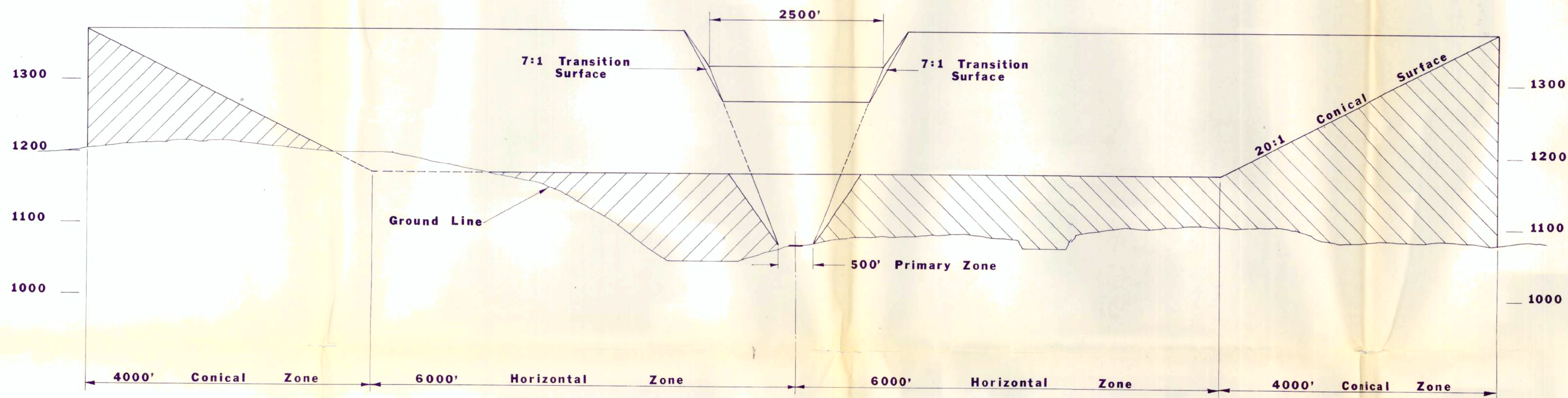


**Section A-A**

SCALE  
 H-1" : 1000'  
 V-1" : 100'



**PERSPECTIVE VIEW**  
 showing  
 IMAGINARY SURFACES  
 no scale



**Section B-B**

I hereby certify that this design, specification, or report was prepared by me or under my direct supervision and that I am a duly licensed professional engineer in the State of Minnesota.

DESIGNED BY: RWM  
 DRAWN BY: GLE  
 CHECKED BY: GLE  
 SURVEYED BY:  
 SCALE: AS NOTED

408 BOARD OF TRADE BUILDING  
 DULUTH, MINNESOTA 55802

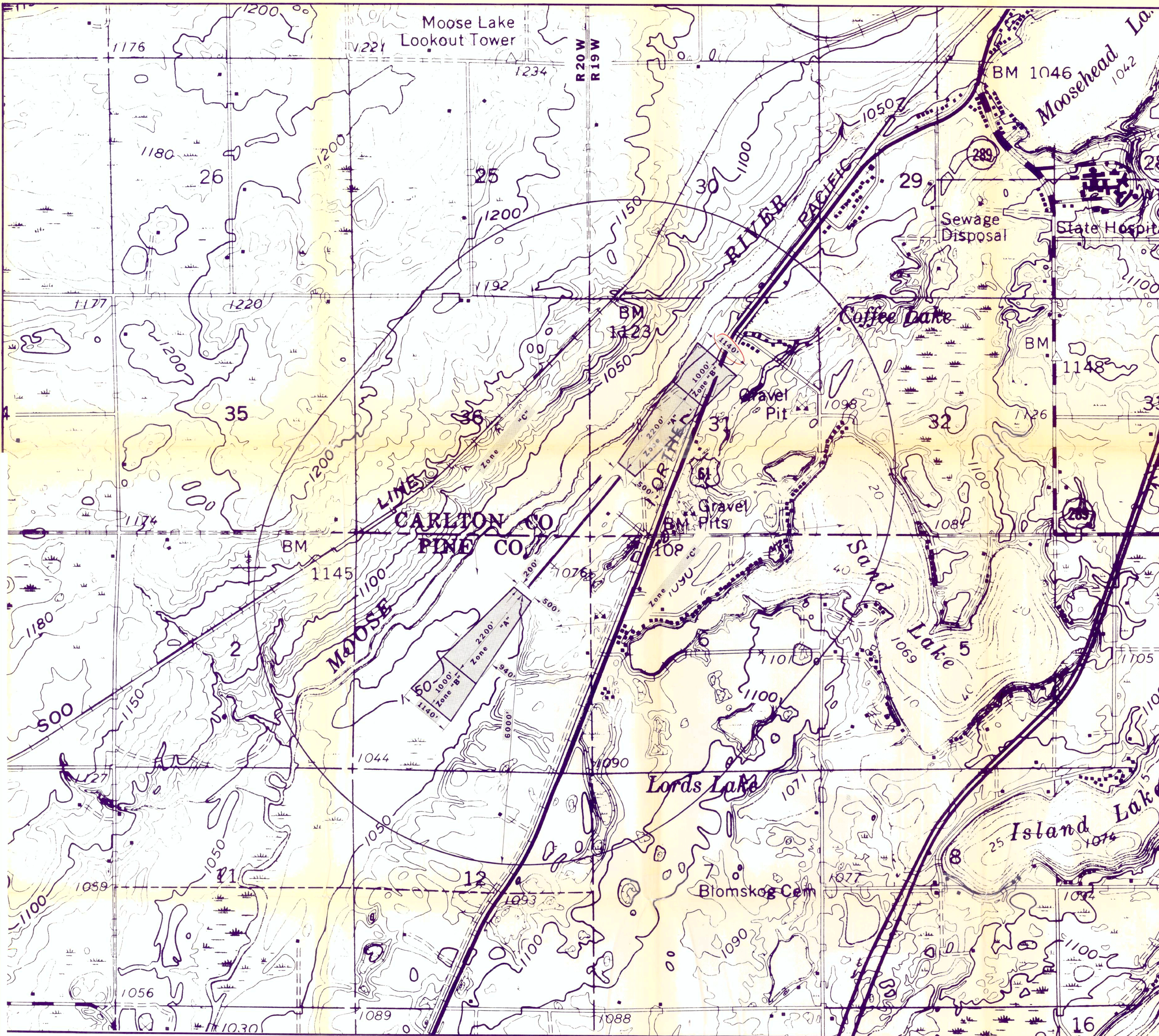
**PREM, INC.**  
 CONSULTING ENGINEERS  
 WATER AND WASTE WATER SYSTEMS DESIGN  
 CIVIL ENGINEERING □ CHEMISTRY

NO.	DATE	DESCRIPTION	REVISIONS

MOOSE LAKE - CARLTON COUNTY AIRPORT  
 MOOSE LAKE, MINNESOTA  
 AIRSPACE SECTIONS

DATE 12-3-73  
 W.O. No. 4503  
 SHEET NO. 2  
 OF 3

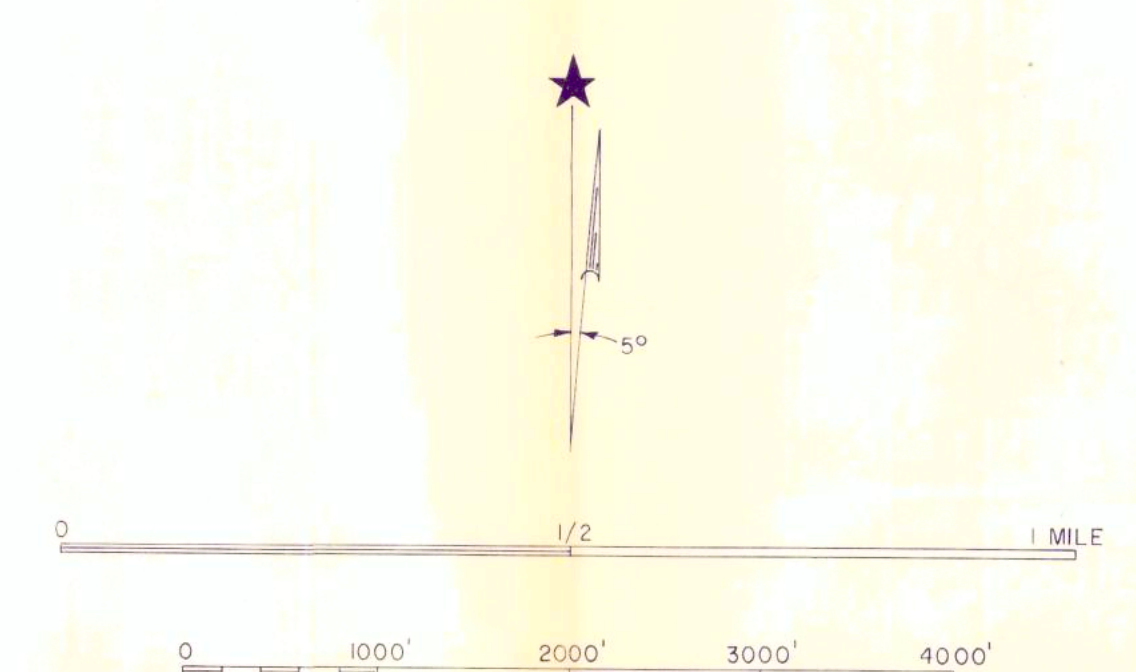




NOTES:  
 1. TOPOGRAPHIC CONTOUR INTERVALS ARE 10 FEET DATUM IS MEAN SEA LEVEL ELEVATION.  
 2. EXISTING TOPOGRAPHIC SYMBOLS ARE THOSE USED BY THE U.S. GEOLOGICAL SURVEY.

$A + B$   
 $2200 + 1000 = 3200$   
 $1000 \text{ Feet} =$   
 $\frac{3200}{10} \times 2 + 150 = 700$

*series*  
 $A + B = 2200 + 1000 = 3200$   
 Then  $3200 \div 3 = 1066.67 = 3 \text{ (legends)}$   
 $1066.67 \times 2 = 2133.34 = A$   
 $3200 - 2133.34 = 1066.66 = B$



**LEGEND**

ULTIMATE RUNWAY  
 ZONE BOUNDARY  
 TOPOGRAPHIC CONTOURS  
 SECTION LINES

OR

I hereby certify that this plan, specification, or report was prepared by me or under my direct supervision and that I am a duly registered professional engineer in the State of Minnesota.

DESIGNED BY  
 DRAWN BY RWM  
 CHECKED BY GLE  
 SURVEYED BY  
 SCALE: AS NOTED

408 BOARD OF TRADE BUILDING  
 DULUTH, MINNESOTA 55802

**AREM, INC.**  
 CONSULTING ENGINEERS  
 WATER AND WASTE WATER SYSTEMS DESIGN  
 CIVIL ENGINEERING □ CHEMISTRY

NO.	DATE	DESCRIPTION	REVISIONS

MOOSE LAKE - CARLTON COUNTY AIRPORT  
 MOOSE LAKE, MINNESOTA  
 LAND USE ZONING PLAN

DATE 11-29-73  
 W.O. NO. 4503  
 SHEET NO. 3  
 OF 3